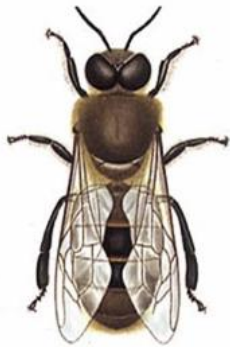


a.



b.



c.



8. Queen is fertilized:

- a) During flying outside, once in a lifetime
- b) Inside the hive
- c) During flying outside, each year
- d) During flying outside or inside the hive

9. Determine the correct order of works that bees carry out after hatching:

- a) Cleaning of cells; feeding of larvae; processing of nectar; building of honeycombs; guarding; foraging bee;
- b) Guarding; cleaning of cells; feeding of larvae; processing of nectar; foraging bee; building of honeycombs;
- c) Cleaning of cells; building of honeycombs; foraging bee; guarding; feeding of larvae; processing of nectar;
- d) feeding of larvae; guarding; cleaning of cells; foraging bee; building of honeycombs; processing of nectar;

10. What is the minimum temperature for bees to fly?

- a. 12 ° C / 53,6°F
- b. 14 ° C / 57,2°F
- c. 16 ° C / 60,8°F
- d. 10 ° C / 50,0°F

11. The honey is for the bees:

- a. a source of energy
- b. a source of proteins
- c. a food for larvae of queen bees
- d. a food for larvae of drones

12. Pollen is for the bees:

- a. a source of food for larvae development
- b. a source of energy when flying
- c. a source for building the frames

- d. a source for honey making

13. Propolis is for the bees:

- a. a protection against diseases
- b. food for the queen bees
- c. needed for building of honeycomb
- d. a source of energy

14. Bee sting can be found in:

- a. queen bee and worker bee
- b. queen bee and drone
- c. worker bee only
- d. drone only

15. A bee has:

- a. 2 compound and 3 simple eyes
- b. 3 compound and 2 simple eyes
- c. 2 compound and 2 simple eyes
- d. 3 compound and 3 simple eyes

16. The wings grow from:

- a. thorax
- b. abdomen
- c. head
- d. anus

17. Honey sac is placed on:

- a. abdomen
- b. thorax
- c. head

18. Bee space is:

- a. a gap for free passing of the bees
- b. a gap which is filled with wax by the bees
- c. a gap, which is propolized by the bees
- d. a gap, which is used by the bees as an entrance

19. When opening the hive in the winter, it is possible to see:

- a. abdomen of the bees
- b. whole bodies of the bees
- c. heads of the bees

20. It is possible to see on the body of the bees:

- a. females Varroa destructor

- b. males Varroa destructor
- c. females and males Varroa destructor
- d. junior individuals Varroa destructor

21. If the colony dies off by starvation:

- a. the bees are dead in the cells of the honeycomb
- b. the bees are dead at the bottom of the hive
- c. the bees are dead, the hive is empty and without stock
- d. the bees are dead, the hive is empty but with the stock

22. Flower honeys, which crystallise quickly, contain:

- a. more of glucose
- b. more of fructose
- c. the same ratio of glucose and fructose
- d. the ratio of glucose and fructose content does not matter

23. The queen bee at its best lays daily:

- a. ca 2 000 eggs
- b. ca 1 000 eggs
- c. ca 5 000 eggs
- d. ca 3 000 eggs

24. The bees swarm during the nice weather:

- a. on 9th day when the mother cell is capped
- b. on 16th day when the mother cell is capped
- c. on 19th day when the mother cell is capped
- d. on 29th day when the mother cell is capped

25. Natural arrangement of stock and brood in the hive is as follows from the bottom up:

- a. brood, pollen, honey
- b. pollen, honey, brood
- c. brood, honey, pollen
- d. honey, brood, pollen